

Enrollment Project Dashboard

Select Active Dashboard

Course Offerings

Search

Analysis Run

Fall 2012

Spring 2012

Campus

M

OFF

College

00

AS

Department

ADAF

BIOL

BUAD

Subject

ACC

AMS

ANT

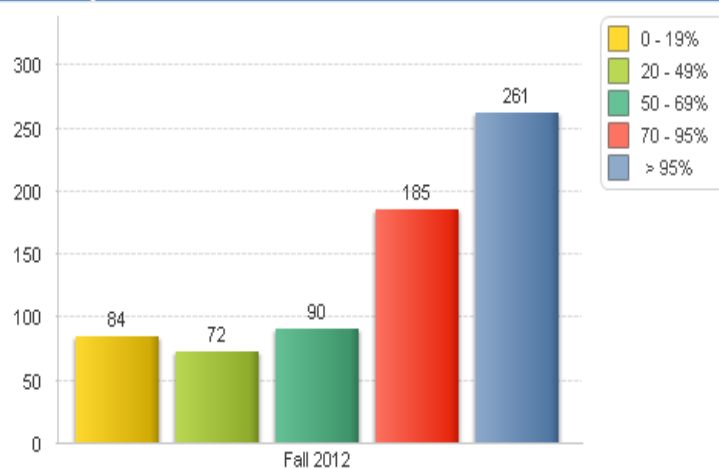
Back

Clear

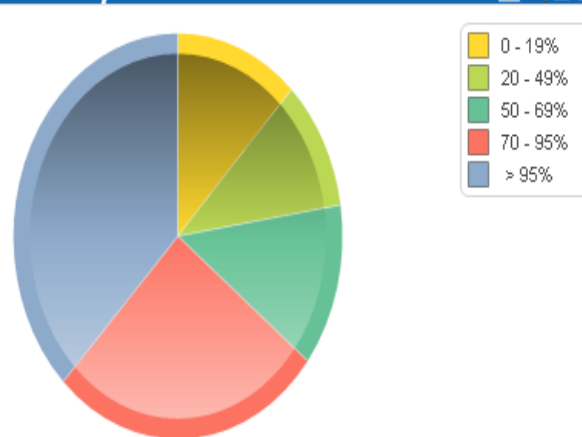
Forward

Show Current Selections

Courses by Enrollment Ratio Tier



Percentage of Courses by Enrollment Ratio Tier



Enrollment Ratio Tiers - Summary Information

Tier	Courses	% of Courses	Enrollment	Enroll Cap
0 - 19%	84	12.14%	1.51	14.60
20 - 49%	72	10.40%	6.99	19.53
50 - 69%	90	13.01%	15.24	25.69
70 - 95%	185	26.73%	22.18	25.50
> 95%	261	37.72%	25.83	25.62
Total	692	100.00%	18.51	23.41

Enrollment Ratio Tiers - Course Detail

Department	Course	Campus	Enroll Ratio	Enroll	Enroll Cap	Sections
ADAF	FYR 174	M	89.46%	20	22	45
ADAF	FYR 310	M	50.00%	20	40	2
ADAF	IIP 200	M	20.00%	1	5	1
ADAF	LAP 130	M	96.45%	19	20	10
ADAF	LAP 130	OFF	65.00%	13	20	1
BIOL	BIO 120	M	100.00%	16	16	3
BIOL	BIO 130	M	102.08%	16	16	3
BIOL	BIO 180	M	11.11%	1	9	1
BIOL	BIO 200	M	98.10%	34	35	3
BIOL	BIO 202	M	100.66%	38	38	8
BIOL	BIO 202	OFF	116.00%	58	50	1
BIOL	BIO 203	M	98.81%	24	24	7
BIOL	BIO 203	OFF	116.00%	58	50	1
BIOL	BIO 205	M	104.17%	25	24	1
BIOL	BIO 206	M	54.17%	13	24	1
BIOL	BIO 220	M	91.67%	44	48	1
BIOL	BIO 228	M	91.67%	11	12	1
BIOL	BIO 230	M	100.00%	32	32	1
BIOL	BIO 280	M	22.22%	2	9	2
BIOL	BIO 301	M	80.00%	32	40	2
BIOL	BIO 304	M	52.50%	21	40	1
BIOL	BIO 305	M	97.50%	39	40	1
BIOL	BIO 305	ONL	72.50%	29	40	2
BIOL	BIO 330	M	100.00%	16	16	1
BIOL	BIO 332	M	100.00%	15	15	1